

Geomate.jr User's Guide

Part Number: 04-0003-01

Date: August 2014

Brand 44 LLC - copyright all right reserved

Notices

The Geomate.jr is a device designed to assist you in locating geocaches and participating in the outdoor activity of geocaching. Safety is important to us, and we remind you to follow the following safety rules to prevent accidents.

Vehicular Use

Do not use the Geomate.jr while driving. It is the sole responsibility of the driver of any vehicle to operate the vehicle in a safe manner. Taking your eyes off the road is dangerous and can result in an accident in which you or others could be injured. If the Geomate.jr is used in a vehicle, it must not be used by the operator of the vehicle.

Good Judgment and Care

The Geomate.jr can provide navigation to a geocache location and also provide the ability to navigate back to a previously marked location. It does not replace the need for careful planning, an awareness of your surroundings, and good judgment. Never rely solely on the device for navigation.

GPS Accuracy

The Global Positioning System (GPS) is operated by the U.S. Government, which is solely responsible for the accuracy and maintenance of the GPS network. The accuracy of resultant positions can be affected by the periodic adjustments to GPS satellites made by the U.S. Government and are subject to change in accordance with the Department of Defense civil GPS user policy and the Federal Radio Navigation Plan. Position accuracy can also be affected by poor satellite geometry and obstructions, like buildings and trees.

Geocaches

Geocaches are owned and placed by members of the geocaching community with the placement and maintenance of any geocache the sole responsibility of individual members of that community. It is possible that a geocache could have been removed or destroyed. In no event shall Brand 44 LLC. be liable for the placement, quality, maintenance, contents, location accuracy, or availability of any geocache.

Liability

In no event shall Brand 44 LLC. be liable for any incidental, special, indirect, or consequential damages, whether resulting from the use, misuse, or inability to use this product or from defects in the product. The user assumes all responsibility associated with the use of this product. Brand 44 LLC. is not responsible for the location or condition of any geocache.

License Agreement

Brand 44 LLC. grants you the right to use the software embedded in this device (the “Software”) in the normal operation of the equipment. The Software is the property of Brand 44 LLC. and/or its suppliers and is protected by United States copyright laws and international treaty provisions. You may not use, copy, modify, reverse engineer or transfer this Software except as expressly provided in this license. All rights not expressly granted are reserved by Brand 44 LLC. and/or its suppliers.

FCC Note

This equipment has been tested and found to comply with the limits for a Class B digital device, pursuant to Part 15 of the FCC Rules. These limits are designed to provide reasonable protection against harmful interference in a residential installation. This equipment generates uses and can radiate radio frequency energy and, if not installed and used in accordance with the instructions, may cause harmful interference to radio communications. However, there is no guarantee that interference will not occur in a particular installation. If this equipment does cause harmful interference to radio or television reception, which can be determined by turning the equipment off and on, the user is encouraged to try to correct eh interference by one or more of the following measures:

- Reorient or relocate the receiving antenna.
- Increase the separation between the equipment and receiver.
- Connect the equipment into an outlet on a circuit different from that to which the receiver is connected.
- Consult the dealer or an experienced radio/TV technician for help.

Shielded interface cable must be used with the equipment in order to comply with the limits for a digital device pursuant to Subpart B of Part 15 of FCC Rules.



Copyright © 2013 Brand 44 LLC. All rights reserved. Brand 44, the Brand 44 logo, Geomate.jr and the Geomate.jr logo are trademarks of Brand 44 LLC. The Geocaching.com logo, Cache In Trash Out and the CITO logo are trademarks of Groundspeak, Inc. Use with permission. All rights reserved. Other trademarks are the property of their respective companies.

Contents

Preface	6
MyGeomate	6
Support	6
Contact Brand 44	6
1. An Introduction	7
What is Geocaching?.....	7
More About Geocaches	7
Hunting Geocaches	7
The Geomate.jr	8
2. Getting Started	9
Bits & Pieces of Your Geomate.jr	9
The Buttons.....	9
Batteries Needed	10
Turning it On & Off.....	11
Start Up Messages	11
Getting a GPS Position	11
3. Geocaching with Your Geomate.jr	13
Set Your Home Position	13
Reviewing Geocache Information.....	13
Selecting Your Target Geocache to Find	15
Selecting a Different Geocache.....	15
Geocache Hunting.....	16
Marking a Geocache as Found	17
Going Home	17
4. Other Features & Functions	19
Available Pages	19
The Geocaching Page.....	20
More on the Closeness Order	20
The Closeness Order & Home	21
Recalculating the Closeness Order	21

	The GC Code Page.....	21
	The Navigation Page	22
	The Found List Page	24
	Clearing the Found List	24
	Low Battery	25
5.	The Update Kit	26
	What does it do?.....	26
	What do I need?.....	26
	The Update Zone.....	Error! Bookmark not defined.
	myGeomate Account	Error! Bookmark not defined.
	Sign in to the Update Zone	Error! Bookmark not defined.
6.	The Geomate Loader	27
7.	Loading a Database to the your PC.....	29
8.	Using the Geomate Loader	32
	About the program	32
	Preferences	32
	Downloading a Database	33
9.	Creating a Custom Cache	34
10.	Troubleshooting and Tools	35
	Old Geomate Update Kit Software (hate to bore you but..)	35
	Virus protection	35
	School, company issue PC's	35
	Geomate Loader doesn't detect my Geomate, missing port or Flash Prog Failed.....	35
	I See the Silabs driver and it still does not work.....	36

Preface



So, you now have a Geomate.jr. Good for you! Your geocaching adventure awaits. If you are reading this User's Guide however, you probably have some questions. This User's Guide contains information like:

- An introduction to the Geomate.jr and the objective of geocaching
- Getting started with the Geomate.jr
- A step by step guide to geocaching with the Geomate.jr, and
- Detailed information about each feature and function of the Geomate.jr

MyGeomate

To make sure you get the latest info about what is happening in the geocaching world, to register your product, and get exclusive Geomate.jr offers, you may want to create your own MyGeomate account:

www.mygeomate.com/sign_up

Support

For all your support needs, you can:

- Visit www.mygeomate.com/support
- Email geomate@brand44co.com
- Call +1 (303) 339.0482

Contact Brand 44

Brand 44 LLC.
169 Corona Street
Denver CO 80219
Email: info@brand44co.com

1. An Introduction



We would like to introduce you to our friend, the Geomate.jr. The Geomate.jr is the anywhere, anytime, works out-of-the-box geocacher and is the easiest way to get in on the geocaching fun. But first, a little about geocaching...

What is Geocaching?

Hidden all over the world are “geocaches”. The objective of geocaching is to find these hidden “geocaches”. Think of it as a world-wide modern-day treasure hunt where a GPS receiver is used to navigate you to the location of the treasure. And the treasure is the geocache!

More about Geocaches

A geocache is a container that can look almost like anything, and be almost of any size. They are typically a clear plastic container the size of your hand. But they can be as tiny as your thumbnail, or be as large as a bucket! They will usually have an official “geocaching” sticker on them or be marked as such.

Inside a geocache you will find a log book and often, small trinkets. Once you find a geocache, you should sign the log book, and if there are trinkets, you can trade!



If you trade trinkets, make sure you replace what you take with something of equal or greater value! Keeps it fun for everyone.

Once you have finished with your geocache, you need to hide it in the exact same spot as you found it.

Hunting Geocaches

Finding geocaches can be tricky. But it’s half the fun! The GPS receiver, in this case, your Geomate.jr will only get you close to the location of the geocache. By close, we mean something like 10 feet or so. The rest is up to you! You need to look around and find the hidden geocache.

They can be hidden almost anywhere! Common hiding places and tricks include:

- In or behind bushes
- Inside or under logs
- Magnetically attached to the back of street signs
- Underneath park benches
- Between rocks or small caves
- In gaps in rock walls

So you have to look hard and don't give up too easily. Keep in mind that there is a chance that the geocache that you are looking for just may not be there anymore. It doesn't happen often, but they can disappear.



Geocaches can be hidden almost anywhere, but remember, they are never ever buried!

To help in your hunt, the following information is provided for every geocache:

- **Size:** To know how big the geocache that you are looking for is, a rating between 1 and 4 indicates the size of it. A "1" is a very small geocache or micro-cache, while a "4" is a very big geocache, something like a bucket or large metal box.
- **Terrain:** This is a rating between 1 and 5 (and you can have halves) and tells you how difficult the terrain is that you will have to cover. A "1" rating will be a walk along a garden path (or something just as easy) while a "5" means you will probably be climbing a mountain!
- **Difficulty:** Another rating between 1 and 5, this tells you how well the geocache is hidden. A "1" means it should be easy to find, while a "5" is very, very hard to find.

The Geomate.jr

So how does the Geomate.jr fit into all this? Well, let us tell you. The Geomate.jr is your geocache hunting tool. It comes out of the box loaded with approximately 250,000 geocache locations that cover all 50 U.S. states. When you switch the Geomate.jr on, it works out which geocache is closest to your current position, displays the size, terrain, and difficulty information for that geocache, and then guides you to it! All you need to do is follow the arrow and distance and it will lead you straight to where the geocache is hidden.

2. Getting Started



The following is a quick rundown of the things that you need to know to get your Geomate.jr up and running and ready to go hunt your first geocache. Don't worry, it'll be quick.

Bits & Pieces of Your Geomate.jr

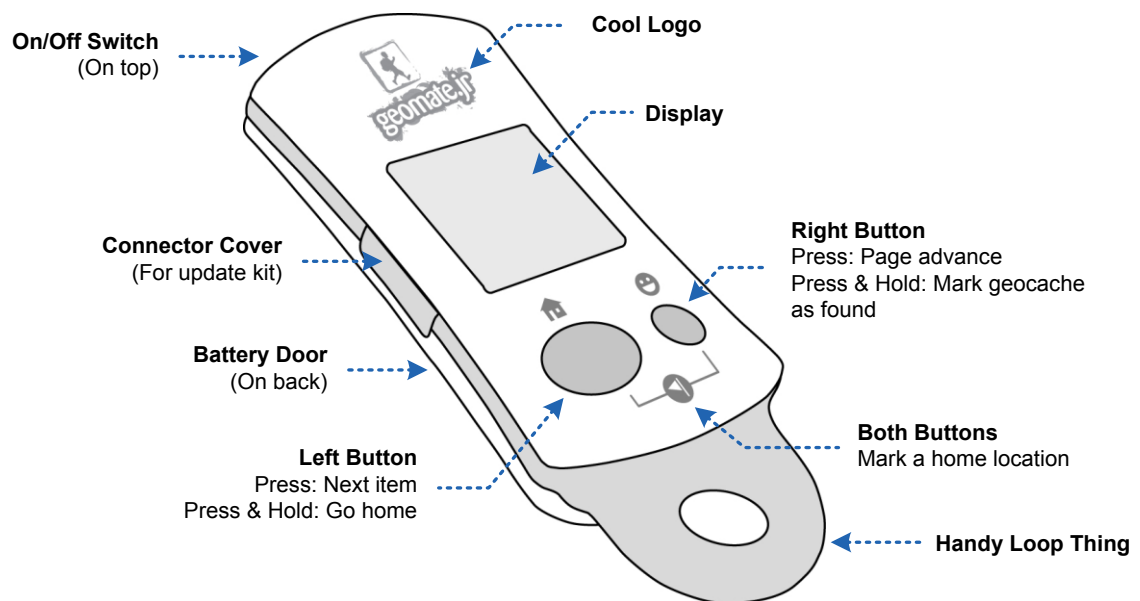


Figure 1: Handy to know bits and pieces of your Geomate.jr

The Buttons

Your Geomate.jr has only two buttons. Yep, only two. But it's quite amazing what you can do with just two buttons! There are three possible ways the buttons can be used. They are:

1. A simple press
2. A press and hold (for a few seconds)
3. Press and hold both buttons at the same time

The symbols that are on the buttons themselves indicate the action that will be taken if a button is just pressed. The icons above and below the buttons indicate the action if the button is pressed and held.

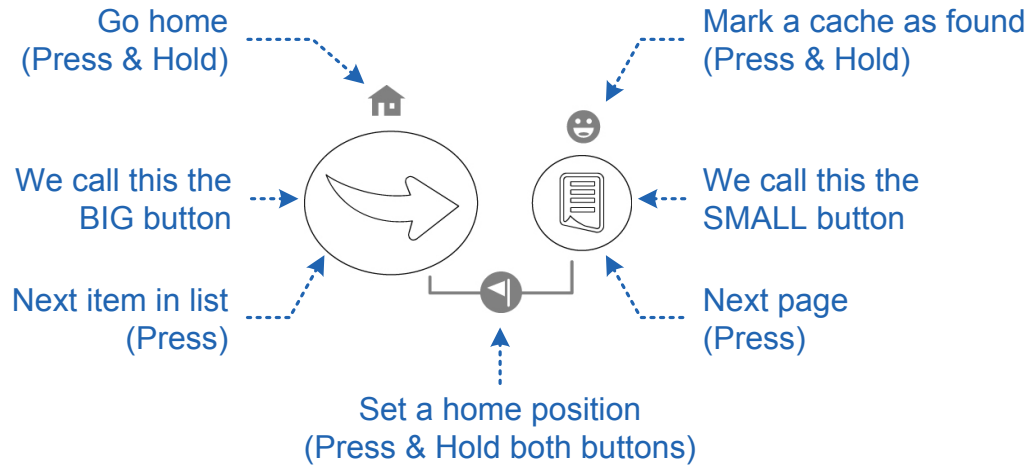


Figure 2: Buttons and their actions of your Geomate.jr

Batteries Needed

The Geomate.jr needs two AAA batteries. To get the batteries inside and around the right way:

1. Remove the battery door by pressing on the Geomate.jr guy on the battery door, slide the door back, and then lift it up.
2. Insert the batteries making sure that they follow the battery diagram located in the battery compartment.
3. Don't forget to replace the battery door! (What you did in step 1 but in reverse.)

Turning it On & Off

To turn the Geomate.jr on or off:

1. Simply hold the power switch down for a second or two.

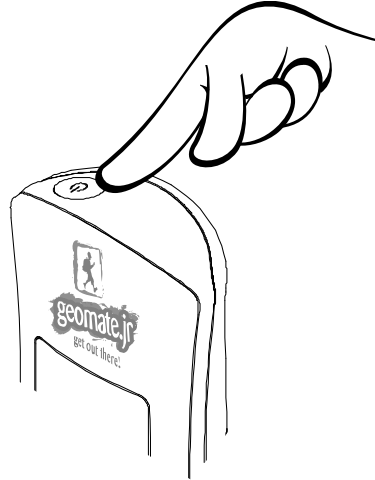


Figure 3: Hold the power button for a second or two to turn it on or off.

Start Up Messages

When you first switch on your Geomate.jr, you will see numbers and words appear in sequence. The following table will explain each of the items you see.

This Item:	Means This:
V1004	This is the software version running on your Geomate.jr. You may be asked for this if one day you have some questions about using your Geomate.jr.
5/21	The next thing you will see is a month and day. This is the date of that the geocache list that you are using was compiled.
2013	You will see a year as well. This is the year that the geocache list that you are using was compiled.
HELLO	A nice warm greeting to start your day right!

Getting a GPS Position

Your Geomate.jr uses signals from GPS satellites to calculate its position on the earth. Each time you switch on your Geomate.jr, it must search for these

satellites, obtain information from them, and then do a bunch of number crunching. This process may take a minute or so. Also, as GPS signals do not pass through buildings, the Geomate.jr only works outdoors.

To get a GPS position:

1. Take your Geomate.jr outside (a good clear view of the sky is the best) and switch it on.
2. Wait while your Geomate.jr searches for satellite signals. While it is doing this, you will see a little satellite symbol “flashing” as well as some messages to help you such as “GPS SRCH” and “FIND CLEAR SKY”.
3. Once your Geomate.jr has found the satellites and has calculated its position, the satellite symbol will stop flashing and signal bars will appear.

The accuracy of the position calculated by your Geomate.jr depends on many factors including where in the sky the satellites are, the strength of the signal, or signal interference by nearby objects. The satellite symbol shows the current status of the GPS and the position quality.

If you see:	It means:
-------------	-----------



Your Geomate.jr is searching for satellites and does not have a valid position. It is not possible to hunt geocaches in this state. Make sure you have a clear view of the sky.



Your Geomate.jr has a position but the quality of the position is not good. It is possible to begin hunting geocaches but it may not get you very close to the geocache.



The position quality is OK and getting better. We think you should be fine searching for geocaches but you may need to search harder.



Your Geomate.jr has pretty good position quality and you should have no problem searching for geocaches with this position quality.



Your Geomate.jr has the best quality position it can get! Those geocaches don't stand a chance...



If the satellite symbol keeps flashing after a few minutes, make sure you have a clear view of the sky and/or fresh batteries.

3. Geocaching with Your Geomate.jr



Now that you have your Geomate.jr powered up, tracking satellites, and with a position, you are ready to start hunting geocaches! This section gives you a quick overview of what it takes to go geocaching with your Geomate.jr.

Set Your Home Position

Before you go running off into the woods, park, or open space to go hunt some geocaches, it's a good idea to "Set a Home Position" so you can find your way back later.

To set your home position:

1. Make sure you have a valid GPS position. (The satellite symbol should not be flashing)
2. Hold both buttons down for a few seconds.

You will see the message "HOME SAVED" flash on the screen. This means that you have successfully stored a home position!

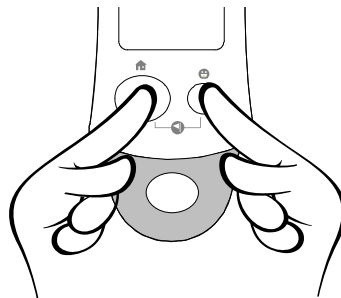


Figure 4: You can set your home position by holding both buttons for a few seconds

Reviewing Geocache Information

As soon as your Geomate.jr has a valid GPS position, it will calculate the closest geocache to your current position and display information about that geocache.

Your display will look something like this:

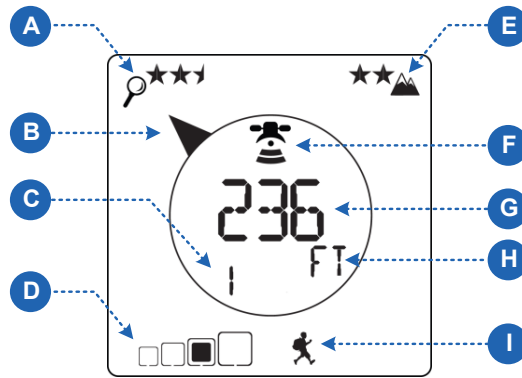


Figure 5: Your display will look something like this

This Item:	Means This:
A	This is the “Find Difficulty” rating; it tells you how hard it will be find this geocache. It is out of “5” with 5 being the hardest.
B	This is the arrow pointing in the direction of the geocache. If you are not walking, this arrow will not be available.
C	This is the closeness order of the geocache. In this example, the currently selected geocaching is the “1 st ” closest to your location. If the geocache was the 2 nd closest, this would be a 2.
D	And this is the size of the cache. Ranging between 1 and 4 with a 1 being a very small “micro-cache” which could be as small as your thumbnail and a 4 being as big as a bucket!
E	This is the “Terrain Difficulty” rating. Out of “5” with 5 being the hardest, this gives you an indication of the type of terrain you need to cover to get to the geocache.
F	This cool little satellite symbol gives you an indication of the position quality. The more bars, the better.
G	This is the distance to the geocache.
H	This tells you what units the distance is in. You will see “FT” for feet, and “MI” for miles. If you are closer than half a mile, it will display feet. Any more than that, the distance will be in miles. Metric is selectable using the GeomateLoader program.
I	This little guy shows you that you are currently viewing the “Geocaching” page. More about this and others later.

Selecting Your Target Geocache to Find

Now it's time to decide on which geocache you would like to try to find. You can use the information about each geocache to help make your decision.

You should consider things like how close it is to you, how hard it is to find, and also how difficult the terrain might be. If the terrain difficulty is a 4 for example, it could mean you are about to cover some very rough or steep terrain.

One important consideration is the size of the geocache you have selected. Micro-caches (shown by the smallest square) can be very small, difficult to find and very rarely have trinkets to trade. So if you are looking for an easier find with some trading potential, a larger geocache may be more your style.



For your first hunt, you may want to consider hunting larger geocaches (sizes 2, 3, or 4). They are easier to find and can be more rewarding than a "micro-cache" (a size 1).

Selecting a Different Geocache

If you don't want to go to the closest geocache it is very easy to select the "next" closest geocache instead.

To select the "next" closest geocache:

1. Press the BIG button.

The "closeness counter" will go to 2, and the size, terrain, and difficulty ratings, along with the distance will be updated.

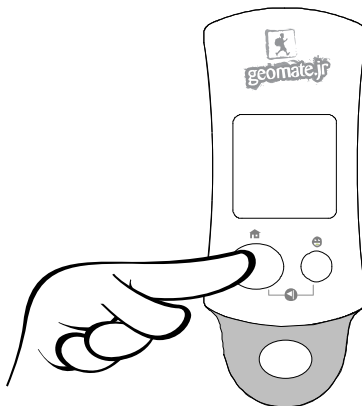


Figure 6: If you don't like the current geocache, just hit the BIG button to select the "next" closest geocache

You can keep clicking the BIG button to see the 2nd, 3rd, 4th, etc closest geocache up to 20. When you reach 20, it will go back to the start of the list.



A quick way to get back to the start of the geocache list is to press and hold the BIG button. It will take you straight back to the start of the list.

Geocache Hunting

OK, we've reviewed the geocaches closest to where we are and know which one we want to find. We have stored a home position so we can get back safely. Now it's time to find the geocache!

To navigate to where the geocache is hiding:

1. Hold your Geomate.jr straight (like a compass) in front of you and walk!

You will see an arrow appear. This is the arrow that will keep pointing you to the geocache. It's important that you keep your Geomate.jr straight in front of you and not twist it around when following the arrow.

2. Keep following the arrow and watch the distance. The distance should keep getting smaller as you get closer to the geocache.
3. When you get the distance as small as possible, somewhere from 0 to 10 feet, this is ground zero! This is where you start searching for the geocache.

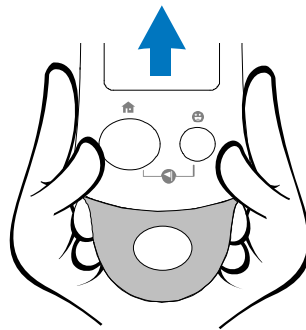


Figure 7: When hunting your geocache, hold your Geomate.jr straight and in front of you – just like holding a compass!



You must be walking for the arrow to appear. If you stop walking, the arrow will disappear. This is because you must be moving for the arrow to be meaningful.

Marking a Geocache as Found

Once you have found a geocache, you can mark it as found. This is really handy to make sure you don't accidentally try to find a geocache that you've already found. (Unless you really want to of course).

By marketing a geocache as found, it also gets added to the "Found List" that you can review later and log your finds on www.geocaching.com

To mark a geocache as found:

1. Simply press and hold the SMALL button.

Once a geocache has been marked as found, it will be added to the Found List and a 'smiley' will be displayed on the main Geocaching page if that geocache is selected.

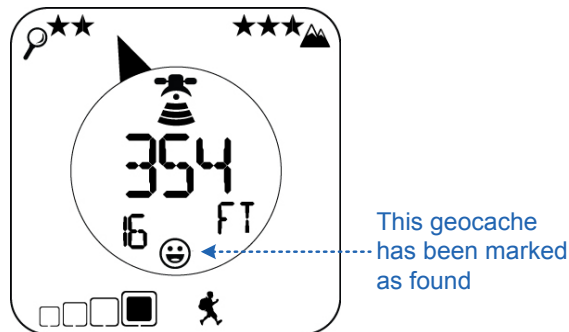


Figure 8: This geocache has already been marked as found.
See the smiley?

Going Home

You've found the geocache. Congratulations! It's now time to go home. Remember when we saved a home location? Now we can use that to navigate home.

To navigate home:

1. Press and hold the BIG button for a few seconds.

A "HO" will be displayed to show that you are heading home. It will look like this:

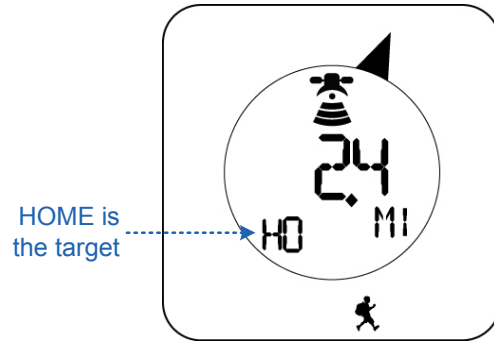


Figure 9: You will see something like this if “going home”.

2. Now just follow the arrow and distance to get back to the point where you stored your home location.

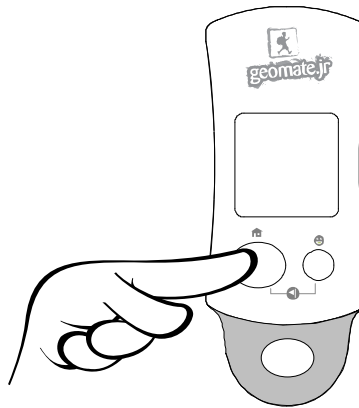


Figure 10: To be guided back to your home location, just press and hold the BIG button

4. Other Features & Functions



Now for some information about all of the other features and functions of your Geomate.jr. There will also be a little more detail about certain operations. We hope you find it helpful.

Available Pages

Your Geomate.jr has four “pages” that are dedicated to different functions. There is a unique page icon for each page to make it easy to tell which page you are currently on.

If you see:	You are on:	Which is for:
	The geocaching page	Selecting and hunting geocaches. This is the page that you will spend most of your time.
	The GC Code page	Viewing the GC Code of the selected geocache. A GC Code is a unique identifier for geocaches.
	The navigation page	Accessing the GPS heading, position, and satellite tracking information.
	The found list page	Viewing the list of geocaches that have been marked as found.

To change from one page to the other:

1. Press the SMALL button to move from one page to the other.

You will cycle back to the first page after the last page.

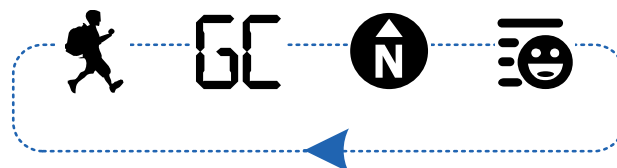


Figure 11: You will cycle through each of the pages and back to the start by pressing the SMALL button

The Geocaching Page

This will always be the page you see when you turn on your Geomate.jr. It is the page used to select and hunt geocaches and is where you will most likely spend most of your time.

For information about the items displayed on the Geocaching Page, please see the section “Reviewing Geocache Information”.

More on the Closeness Order

When you first switch on your Geomate.jr, it will immediately calculate the closest 20 geocaches to your current location. It will order them from 1 (being the closest) through 20 (being the furthest from your position). This is known as the “closeness order”.

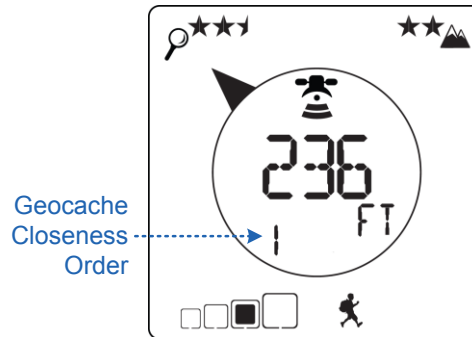


Figure 12: The closeness order tells you if the selected geocache is the closest geocache, or the 2nd, 3rd, etc.

All 20 closest geocaches can be cycled through by repeatedly pressing the BIG button. It is also possible to go back to the start by pressing and holding the BIG button.

The Closeness Order & Home

If a home position has been stored, “Home” becomes the first item of the “Closeness Order List”. So if you cycle through the 20 geocaches (or press and hold the BIG button) it will take you to the “Home” entry. Pressing the BIG button again will advance you to the first geocache.

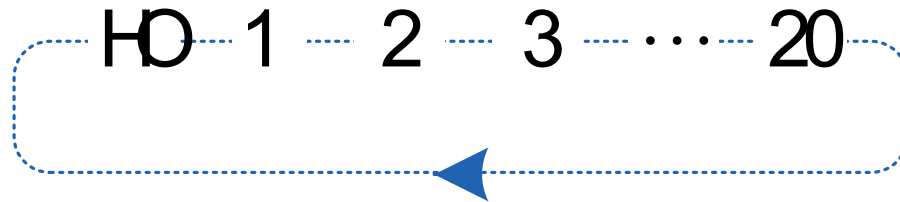


Figure 13: If a “Home” position has been saved, it will become the first entry in the Closeness Order List

Recalculating the Closeness Order

The closeness order is calculated when you turn on your Geomate.jr. The order of geocaches will remain exactly the same and be relative to the position that your Geomate.jr was turned on.

To recalculate the closeness order of geocaches:

1. Turn your Geomate.jr off and back on again.

When this happens, the geocaches will then be ordered by closeness based on your new position.

The GC Code Page

Every geocache has its own unique identifier. This is known as its GC Code. You can use the GC Code to:

- Make sure you are going to the same geocache as your geocaching buddy
- Select a geocache that you already know the GC Code of that you want to find
- Identify the geocache that you just found so you can log your find at www.geocaching.com
- Identify the geocache that you didn't find so you can look up the hints on www.geocaching.com and try again!



Figure 14: This is what a GC Code could look like.

When on the GC Code page, you can scroll through each of the geocaches and see their GC codes by pressing the BIG button.

To view GC codes of the geocaches:

1. Press the SMALL button until you are on the GC Code Page.
2. Press the BIG button to scroll through each closest geocache and its GC code.

The Navigation Page

When on the Navigation Page, you can scroll through and view GPS information like heading, latitude, longitude, height above sea level, and GPS satellites being tracked and used.

To view GPS information:

3. Press the SMALL button until you are on the Navigation Page.
4. Press the BIG button to scroll through heading, latitude, longitude, height, and GPS satellites being tracked and used.

The heading view displays the heading that you are currently moving orientated to true north (as opposed to magnetic north). Just like the arrow that directs you to the geocache, you must be moving in order for your Geomate.jr to calculate your heading.



Figure 15: You will see something like this when viewing your heading

The latitude and longitude values are in the WGS-84 coordinate system and expressed in decimal minutes. The height value is height above the WGS-84 ellipsoid which approximates mean sea level.



Figure 16: This is an example of what a longitude would look like

When viewing the satellite tracked and used information, you will see two numbers. The one on the left is the number of satellites that your Geomate.jr is currently tracking. The number of the right however is the number of satellites that your Geomate.jr is actually using to calculate its position.

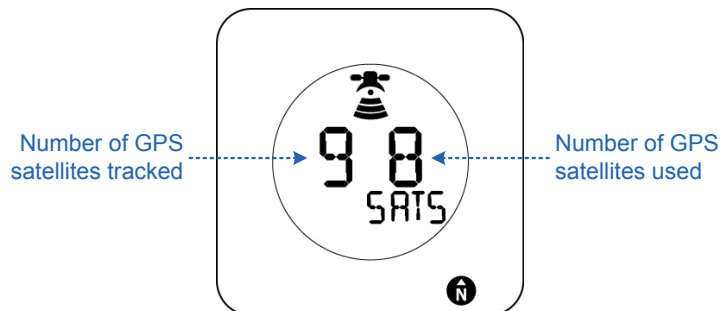


Figure 17: Here's an example of viewing the satellites tracked and used

Generally speaking, the more satellites being used to calculate a position, the more accurate the position will be. However, it is common to not use every satellite available as some satellites have a “noisy” signal or are in a bad position and it is better to leave them out.

The Found List Page

If a geocache is marked as found, it will be added to the Found List. The found list is useful for viewing the geocaches that have been found during a day geocaching so they can be easily logged on www.geocaching.com

To view the Found List page:

1. Press the SMALL button until you are on the Found List page.

When you first get to the Found List page, you will see the text “FOUND” and the number of geocaches that are in the found list.

2. Press the ACTION button to see the first geocache that is in the found list.

Displayed is the GC code, the date it was marked as found, and the order it is in the list. The most recent finds are first in the list.

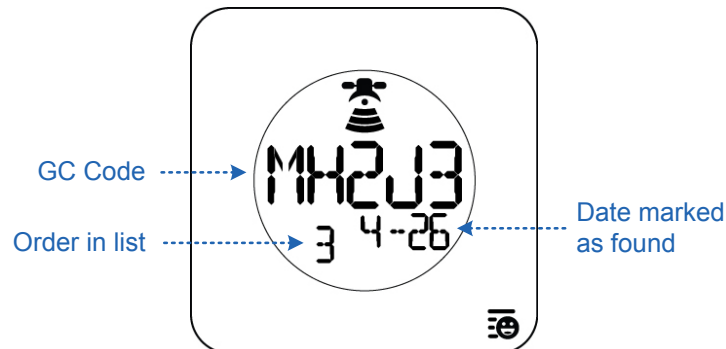


Figure 18: An example of a found geocache listing on the found list page

Clearing the Found List

There are three most likely reasons why you would want to clear the found list. These are:

- Because you want to give your Geomate.jr to someone else and they want to keep track of their own found geocaches
- You have filled up the storage capacity of the found list. Congratulations! This means that you have recorded 1000 finds on your Geomate.jr

- Finally, you have a really bad memory and you want to re-find the same geocaches again!

To clear the Found List:

1. Press and hold (for a really long time, something like 10 seconds) the SMALL button.

You will know you have successfully cleared the Found List when you see a message that says “CACHE CLEAR”

Low Battery

Your Geomate.jr has a low battery warning symbol to make sure you don't get caught out. When the batteries are running low, a battery symbol will flash. Once you see the battery warning symbol, you will have approximately 30 minutes before your Geomate.jr will stop operating.

It is important to change the batteries as soon as you can when you see this symbol as low batteries can start to impact GPS performance.

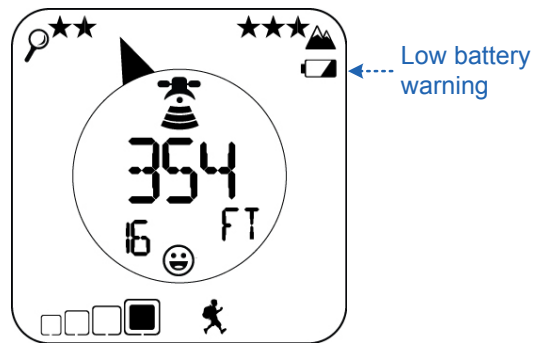


Figure 19: The low battery warning symbol.
You should change batteries ASAP if you see it!

5. The Update Kit

What does it do?

The Geomate.jr has an update capability when you purchase the optional Geomate.jr Update Kit on version 1. The version 2 Geomate.jr comes with the update capability built in and uses a simple USB cable that is now included. It allows the Geomate.jr owner to update the Geomate.jr with the latest caches from www.geocaching.com. On our website, www.mygeomate.com we have Regional databases with the freshest caches from Groundspeak. Unlike the sample cache database that comes with your Geomate.jr the regional cache database includes even more caches for a designated area. Sorry no Premium Caches in the Regional databases, but they can be loaded as Pocket Queries as we will explain (Premium Membership required).



What do I need?

You will need a PC or Mac (Intel running 10.8 or better), internet access, the Update Kit, the Geomate Loader Software from www.mygeomate.com and your Geomate.jr version 1 or Geomate.jr version 2 with USB cable.

Now go to the www.mygeomate.com to load our software.

GeomateJr

First Time?

Geomate Guide:
[Geomate Guide \(PDF\)](#)

Download this helpful guide to learn all about the Geomate.Jr and its Geocachin section.

Geomate Loader (PC)
[Geomate Loader \(PC\)](#)

SILABS DRIVER (.ZIP)
[SILABS Driver \(PC\)](#)



COM Arbitrator
[COM_arbitrator](#)

(See manual page 29).

(Sometimes it does not install with Geomate Loader. Extract Before running).

Geomate Loader (MAC)
[Geomate Loader \(Mac\)](#)

Regions



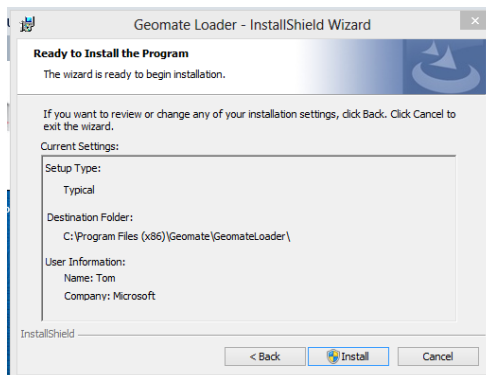
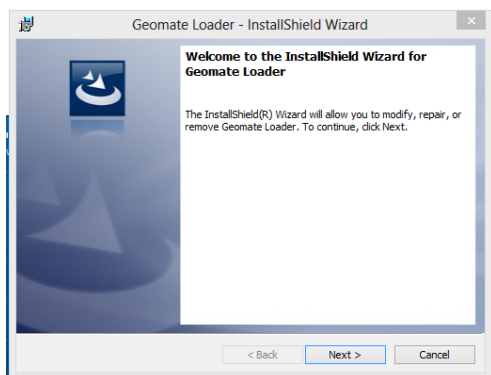
If you need to install the Geomate Loader, follow the next steps.

The Geomate Loader

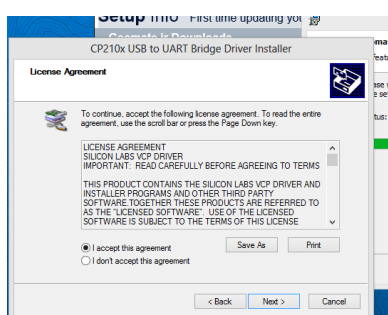
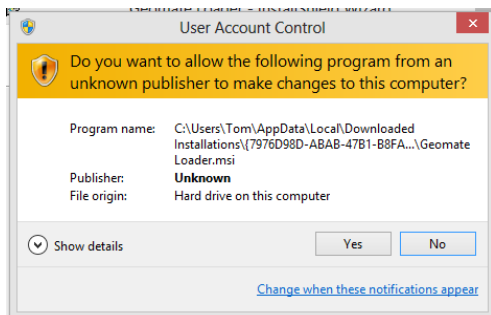
The **Geomate Loader** is a desktop application that you need to load one of the following:



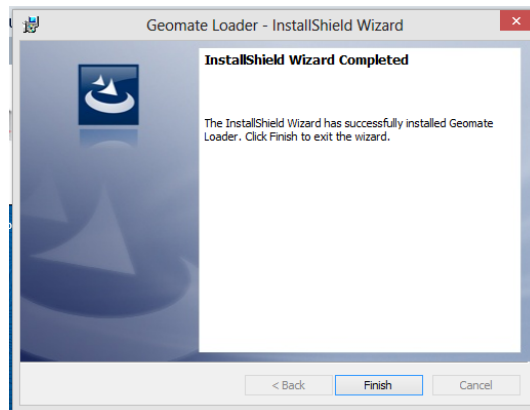
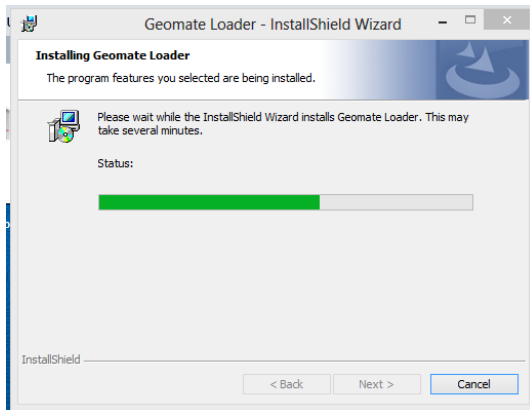
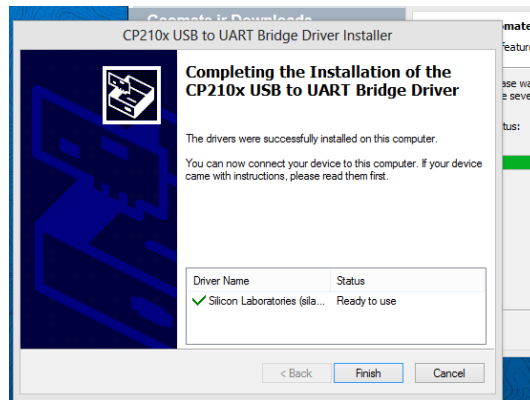
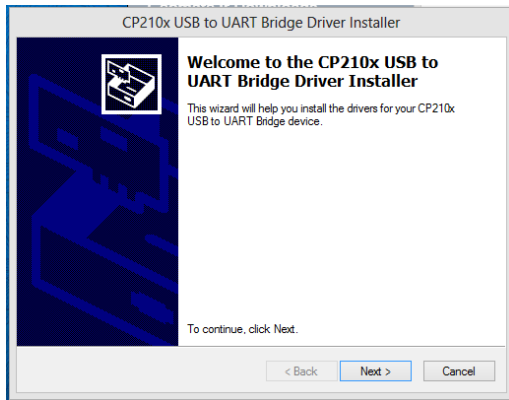
The following screen shots are in sequence of how they will appear to you. Click Next and Install.



If your computer is a School or Company issue you may have problems installing certain programs and especially i/o drivers. You may have to contact your IT admin folks to allow this installation.



You will start the Geomate Loader install program and you will also see that we need to also install a driver from **Silicon Labs**. This driver supports the USB connector needed to communicate with the Geomate.jr using the USB Update Kit.



The Geomate Loader installation will place an Icon on your desktop. You are now ready to load some new databases into your Geomate.jr.

6. Loading a Database to the your PC

Every night while you are dreaming of your next big cache adventure, powerful computers at Groundspeak and Brand 44 are creating the freshest caches on the planet. Our site www.mygeomate.com takes this file and breaks it up into several regions, encrypts them and loads them onto our website for you to download to your computer. The extension on these files is *region_name.cry*. and when you Update, that file will be placed into a directory that your browser has specified. (ie. ~Downloads, ~Desktop or ~Pictures). Here is the process.

Click on Select An Update.

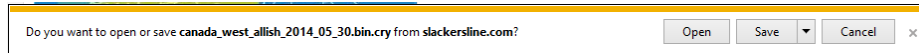



Database	File type	Cache type
Region file	.cry	Public caches from Geocaching.com
Pocket Query	.gpx	Premium caches from Geocaching.com
Custom Cache	.gpx	Your caches saved using EZgps.com

Region File is a selected database that comes from Groundspeak's Geocaching.com's global database. We have divided their database into regions containing up to 250,000 geocaches per region.

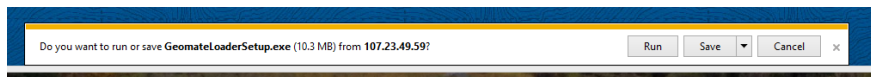


When you click on one of the text fields on the left, you will see:

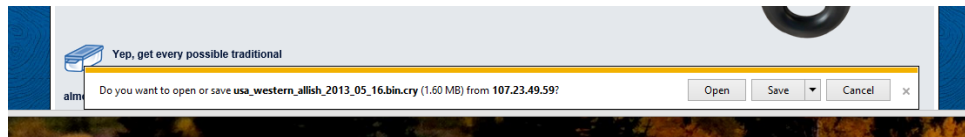


You can click on  the down arrow if you wish to choose where you want to store the data. Then you can proceed to Section 7.

You will see this message on the bottom of your screen. You can save the program to install later or click on Run to install now.



Select the Region of the world that you wish to download and then select "Get them All'ish". After that click on the UPDATE button and the database will be directed at your PC. This is so exciting, you will have to turn the page to see what's next.....



The database you selected is ready to be downloaded to your PC. You can just click on Save, in which case, that database will be saved in the selected download file that you chose in your Browser settings Preferences. If you don't remember setting a Download destination preference like ~Downloads or ~Desktop or ~Pictures you might want to click the little down arrow next to Save so that you can use the Save As that lets you direct where the file goes.

You can now close your browser.

7. Using the Geomate Loader

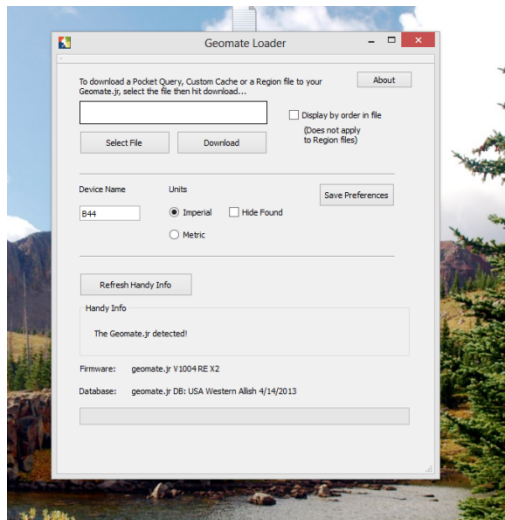
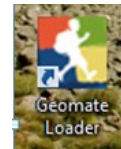
About the program

The Geomate loader is a desktop application. It works with Windows XP, Vista, 7 and 8. It is used to load a database of waypoints and other metadata into the Geomate.jr by way of the Update Kit cable and your PC. The Geomate Loader program can handle any of the following formats:

Mac coming soon.

Name	Source	Description	File type
Region file	Mygeomate.com Update Zone	A region of a country or continent (ie USA_west)	.cry encrypted
Custom Cache	Mygeomate.com Update Zone	A set of up to 20 points Created by the user	.cry encrypted
Pocket Query	Geocaching.com	A Pocket Query set from Groundspeak	.gpx GPS xml Version 1.1
Raw GPS	Easygps.com program	Any gpx (version 1.1) from decimal minutes	.gpx GPS xml version 1.1

After completing the installation of the Geomate Loader program you should see the Geomate logo on your Desktop. Click on it and you will see the following screen.



You can now connect your Update cable to your Geomate.jr and to your PC using one of the USB ports.

Preferences

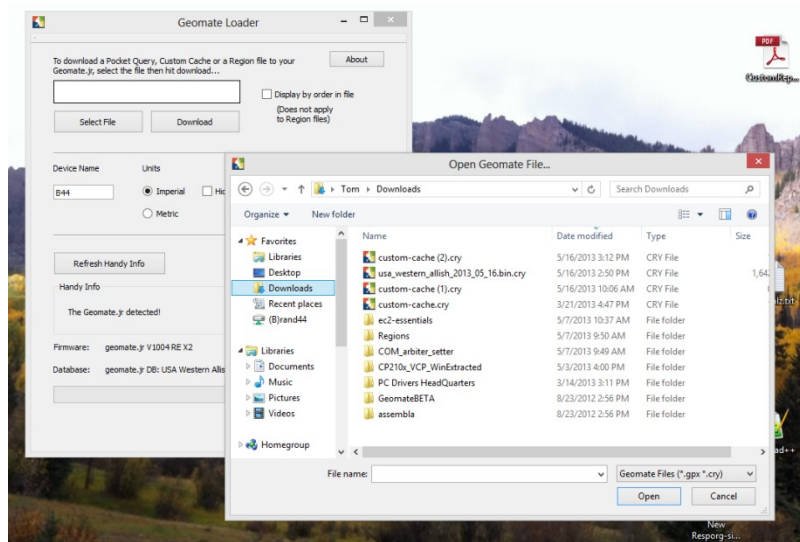
You can choose to use Imperial or Metric distance and you can also give your device a 5 character name by clicking on the Save Preferences button. In the Handy Info box you may see that the Geomate.jr has been detected and the Firmware Version and Database currently loaded.



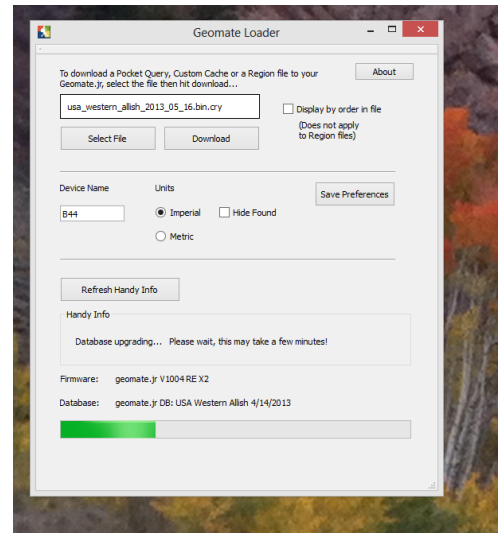
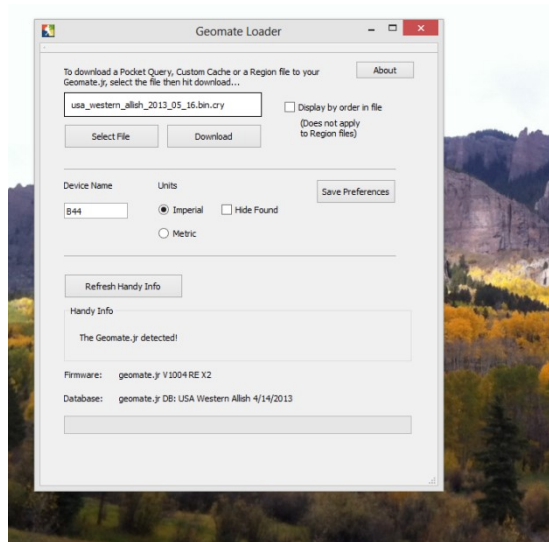
Yes – your Geomate can have a name and we even support you metricans.

Downloading a Database

To Download a database, use the Select File button to find the database you wish to load. Select that database and click on the Open button.

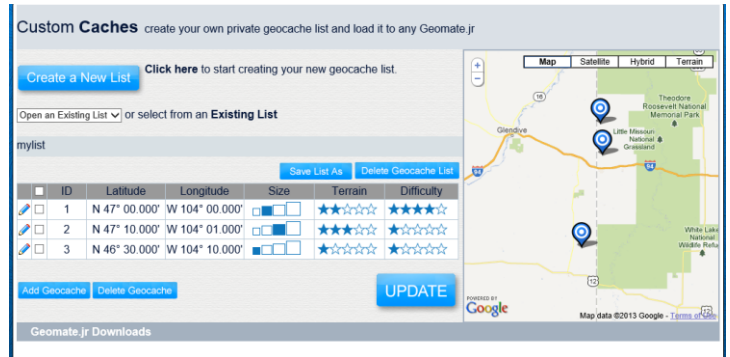
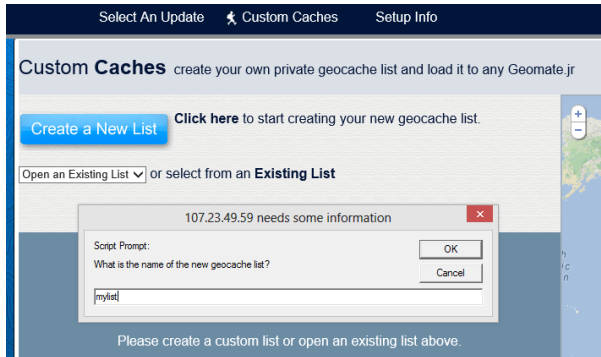


Your selection will fill the box and you are ready to load the database into the Geomate.jr by clicking on the Download button. Your Geomate.jr will turn on and you will see the message LINK and then PROGRAM. The green progress bar will finish in a couple of minutes and you are ready to geocache!

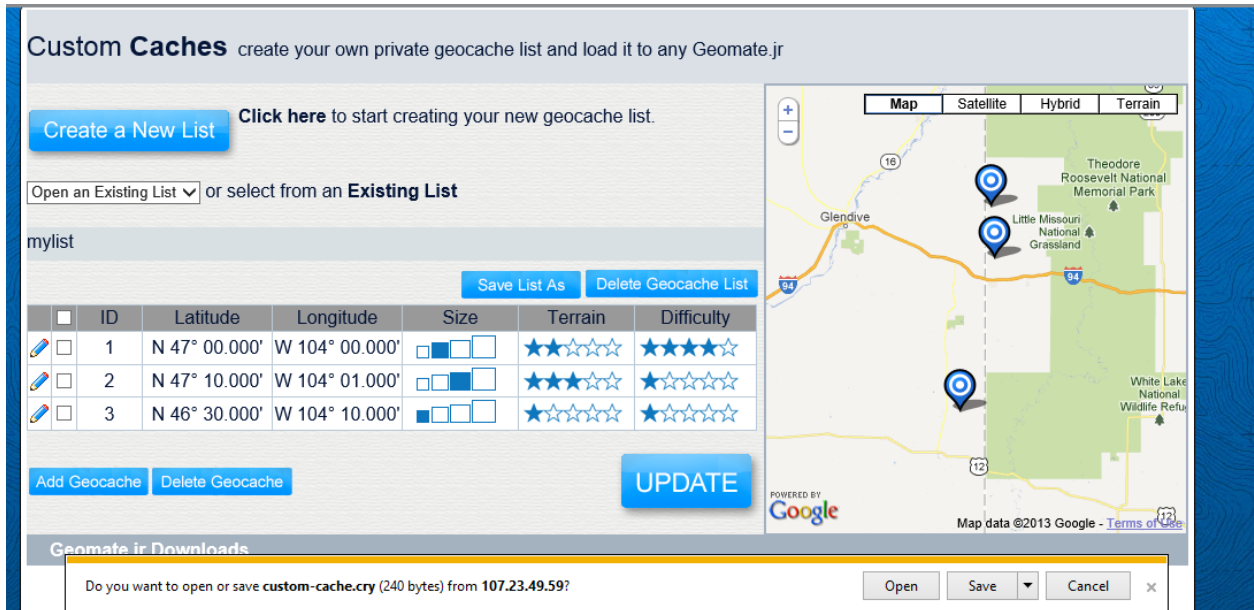


8. Creating a Custom Cache

A Custom Cache is a set of up to 20 waypoints that the user can create using the Custom Cache section of the mygeomate.com Update Zone. A user can create as many sets or lists as wanted. Just click on Create a New List, giving the list a name and you are ready to enter your points. To get you waypoints by can refer to section on the Navigation Page in Chapter 4



As you enter the points you will notice that the Google Map section is plotting your points. You may edit, add or delete the data and you may also select the cache Size, the Terrain challenge and Difficulty to find. When you are finished creating your list, Click on the UPDATE button and you will save that database in the same manner as is Chapter 8 Section Downloading a Database.



9. Troubleshooting and Tools

In a progression of this manual we will try to address all of the possible things that can go wrong and how to fix them. FRESH BATTERIES are the most important item with regard to the Geomate.jr device and check to make certain that they are inserted correctly.

Equipment

We have had a few cables come apart call us for a replacement. The Geomate.jr has an incredible 0.02% failure rate, but we still have a warranty. Often times the problems can be solved in this section.

Old Geomate Update Kit Software (hate to bore you but..)

For best results you should uninstall the old Geomate Update Kit Software from your PC. We also recommend that you disable the Apisphere/Navit Active-x component from your Browser. You can do this by going to your Tools/Manage Add-on section and disabling that component. That old software will not work with newer browsers because when Microsoft stopped supporting Active-X all browsers, including Microsoft, deleted it in newer versions of their browsers. Brand 44 had to re-create a new way and the Geomate Loader is much easier to maintain.

Virus protection

Your virus protection may not like the Geomate Loader or the Silicon Labs driver. So if you have trouble with downloading or installing the programs, turn your protection off until you finish the installation and then back on when you're finished.

School and company issue PC's

Many schools, corporations and government entities that issue or deploy PC's go to great lengths to lock down various functions to prevent whatever. You may need to go to your IT department to unlock certain parts of your PC to complete your installation.

Geomate Loader doesn't detect my Geomate, missing port or Flash Programming Failed

Fresh batteries are first. Sometimes weak batteries will let the device run but do not have the juice to Flash the memory.

Check to see if the Silicon Labs (Silabs) driver successfully installed. You can see it by going to your Control Panel | Add or Remove Programs section and going down the list looking for the

- Geomate Loader program
- Windows Driver Package – Silicon Labs.....6.6.1.0. (Sometimes it is listed as Silicon Labs UART Bridge Driver).

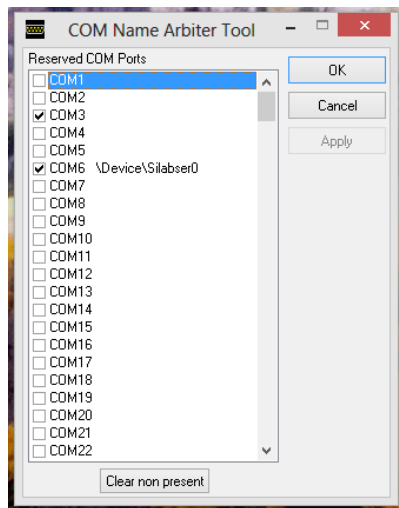
If the Silabs driver is missing you can download the driver and following these instructions:

www.silabs.com/Support%20Documents/Software/CP210x_VCP_Windows.zip

1. Download the zip file.
2. Open and extract it before running the install.
3. Pick and run the extracted the version either 32bit (x86) or 64 bit x64. If in doubt use the 32 bit.
4. After installation – a restart may be necessary.

I See the Silabs driver and it still does not work

Sometimes on computers where many USB devices are plugged in and out the COM port assignment table gets full. The Silabs Driver will only work on ports 1-7. To clear these port assignments you will need to load another program from our website found at www.mygeomate.com/tools. The program is called the COM_Name_Arbitrator_Setter. Load, install and run it to see this screen



If you just click on the Clear non present button on the bottom it will clear out the reservations. You probably will find that your silabs device has been assigned to a COM port over 8 and you will need to:

Uncheck some COMs in the 1-8 range,

Click OK, (right click if you need Admin permission)

Uninstall and reinstall the Windows Silabs driver

Then rerun the COM_Arbitrator to see if it reassigned to a working COM port 1-8



That's all I have. When problems come up we will add them here. Have fun finding yourself - findings things...