

# BONES IN YOUR BODY:

Label each bone in the picture with the parts listed below

Vertebrae (spine)

Pelvis (hip bone)

Skull

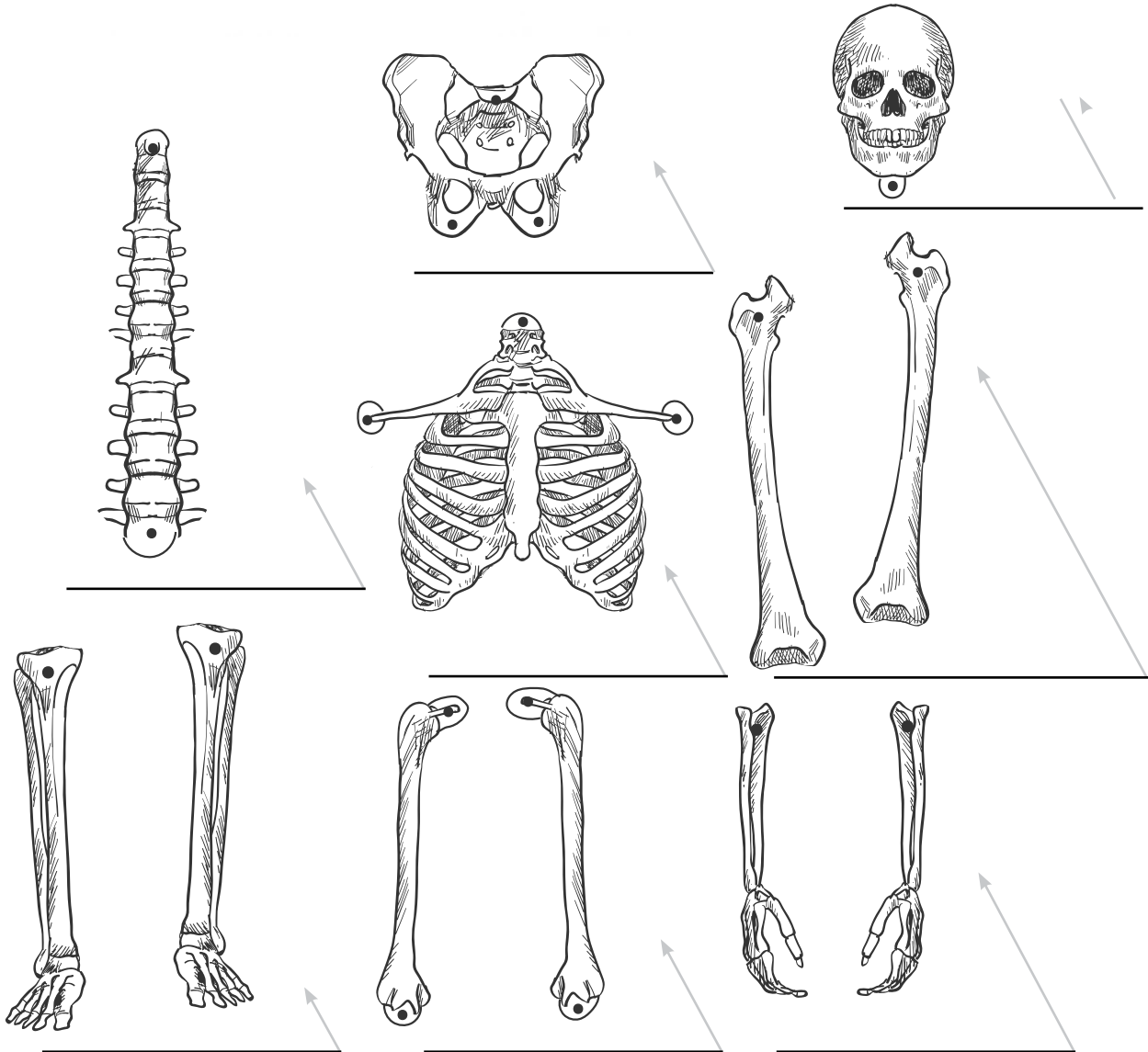
Femur (upper leg bone -2)

Humerus (upper arm bone -2)

Lower arm and hand (2)

Lower leg and foot (2)

Rib cage



## TO MAKE A SKELETON:

Cut out each bone and fit them all together. Use the black dots as guides to connect the bones in the right spots.